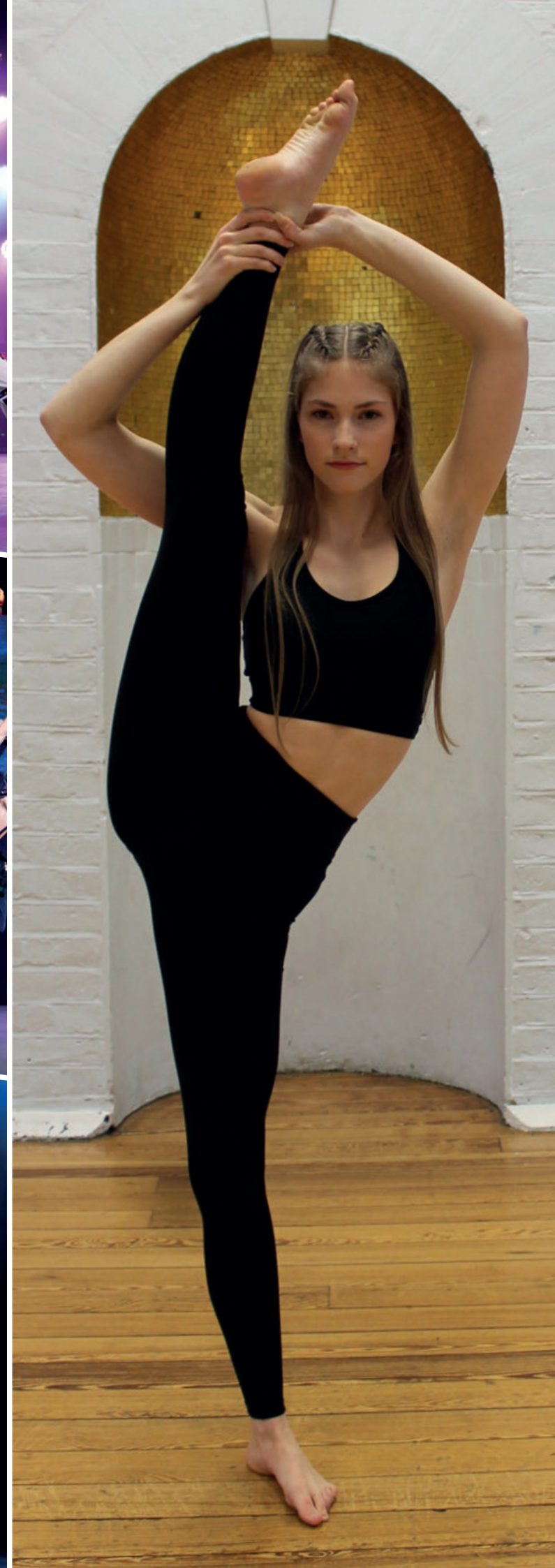


SHARPE

We Are Musical Theatre™



Diploma Prospectus 2024



3 Year Diploma in Professional Musical Theatre & Acting

Apply online at
SharpeAcademy.co.uk

Duration: **3 Years**

Annual Course Fees: **£10,800**

Annual Full Bursary Fees: **£3,600**

Fees with Full Bursary (means tested):
£300 per month (36 payments)

Limited Scholarships Available

Course Summary

- **Triple Threat Training** in Singing, Dance, Acting and Acrobatics
- **Full-time** – 3 Years
- Minimum of **30 weeks per year** including 8 weeks in productions
- Minimum of **30 hours per week**
- Private **1-to-1 Singing Lessons**
- Two **Musical Theatre Productions** each year
- One **Dramatic Play** each year
- **Agency Representation** – 12 month contract with Agent Sharpe from your first day of third year to fully transition into the industry
- **Experienced Industry Faculty**
- London's **West End on our doorstep** (direct train across the road to **London Euston**)
- Regular **Industry Workshops** and weekly **Audition Technique** classes
- State-of-the-art facilities including on-site **500-seat Theatre** and **Studio Theatre**
- **Dance Studios** with professional sprung floors, mirrors and barres
- **Editing Suite** and **Recording Studio** for showreels
- **Student Recreation Hub** for relaxation
- **Vocational exams** available with **Trinity, RAD, ISTD, APC, LAMDA & Acrobatic Arts**
- Full assistance with **Spotlight Membership, Showreels, Photographs & Self-Employment**
- **Small class and year group sizes**

Accelerated 2 Year Diploma

If you have already completed Intermediate or Advanced level dance qualifications, or a Foundation course, and are aged 19+ then we may be able to consider an application for you to join our second year students and complete your training in two years instead of three.

All students will be assessed during their audition day to determine if this option is a possibility.



Industry Diploma in Professional Musical Theatre

Apply online at
SharpeAcademy.co.uk

Duration: **1 Year**

Annual Course Fees: **£6,000**

Bursaries and Scholarships are
not available for this course.

Course Summary

- **Triple Threat Training** in Singing, Dance, Acting and Acrobatics
- **Full-time** – 1 Year
- Minimum of **24 weeks** including 8 weeks in productions
- Minimum of **24 hours per week**
- Private **1-to-1 Singing Lessons**
- Two **Musical Theatre Productions**
- One **Dramatic Play**
- **Agency Representation** – 24 month contract with Agent Sharpe from your first day of college to fully transition into the industry
- **Experienced Industry Faculty**
- London's **West End on our doorstep** (direct train across the road to **London Euston**)
- Regular **Industry Workshops** and weekly **Audition Technique** classes
- State-of-the-art facilities including on-site **500-seat Theatre** and **Studio Theatre**
- **Dance Studios** with professional sprung floors, mirrors and barres
- **Editing Suite** and **Recording Studio** for showreels

- **Student Recreation Hub** for relaxation
- **Vocational exams** available with **Trinity, RAD, ISTD, APC, LAMDA & Acrobatic Arts**
- Full assistance with **Spotlight Membership, Showreels, Photographs & Self-Employment**
- **Small class and year group sizes**

Work while you study

Our agency enables us to submit you for short contracts that you can complete while still studying with us.

It may also be possible for us to defer your studies for you to complete a longer contract, after which you can return to complete your Diploma at a later date. This means you will be able to audition for Musicals, Cruise Ships, Television, Film, Hotels and Resorts as soon as your study year begins.

Venue and Facilities



Sharpe Academy is based at Harrow Arts Centre, Hatch End, North West London.

Harrow Arts recently benefited from a multi-million pound refurbishment and regeneration programme.

Our Grade II-listed **Sharpe HQ** was originally a laundry for the old Harrow Grammar School, but is now a light, airy and well-equipped studio building, perfect for training the next generation of professional performers.

The campus includes:

The Elliott Hall Theatre

A 500-seat professional theatre fitted out with the latest industry standard lighting, sound and special effects. This is where we produce our February backstage project musical, our large scale July musical and also our Graduation performance. The theatre building also includes four dressing rooms, a bar/cafe, box office and small art gallery.

The Boiler House Studio Theatre

A black-box performance space with professional sound and lighting where we perform our musical in November and a series of dramatic plays in March each year.

Sharpe HQ

This building includes:

- The **Ballet Studio** with Harlequin Sprung Floor, Mirrors, Barres & Fitness store
- The **Music Room** with large musical score library for private singing lessons
- The **Student Recreation Hub** designed as an American Diner for students to eat, relax, socialise and watch television. This includes a student kitchen including fridges and microwaves.



● **The Recording Studio and Editing Suite.**

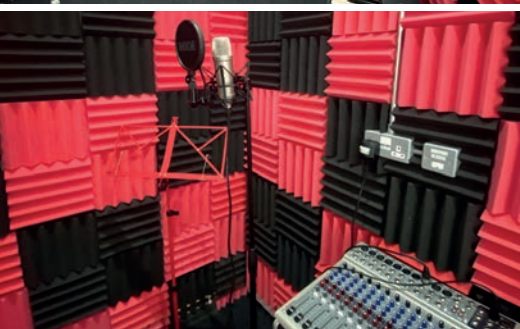
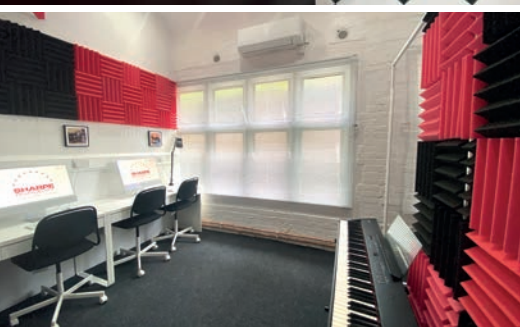
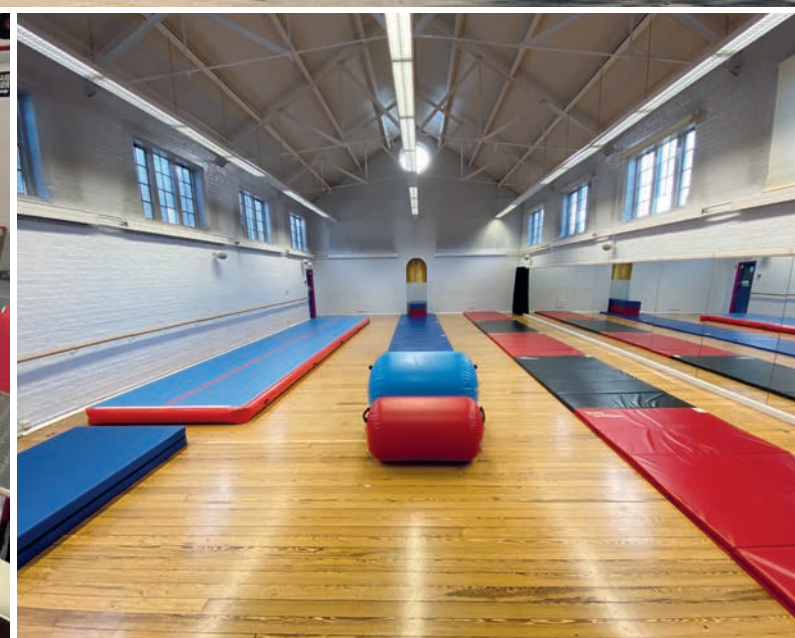
This includes Apple Mac computers for showreels and screen acting projects, professional sound equipment and studio set up to record industry standard vocal reels.

- The **Sharpe Office and Agency Hub**
- Students' changing rooms and toilets

Harrow Arts Additional Studios & Workshops

These buildings include:

- The **Dance Studio** – A large professional dance studio with wooden floors, mirrors and barres. We use this space most days for classes including Body Conditioning, Jazz, Musical Theatre and Acrobatics.
- **Roxeth Tap Studio** with Harlequin Sprung Floor, Mirrors and Barres
- **Greenhill Multipurpose Studios** – A brand new four-studio building with activity floors and plenty of space for workshops, events and student private hire
- **Additional Studios and spaces on site**
There are an additional 7 large and 8 medium/small studios on site, a swimming pool run by Everyone Active and large car park.
- Students can hire non-Sharpe spaces from as little as **£1.00 per hour** if a room is available.





Agent Sharpe

Our books are open.
AgentSharpe.co.uk

Agent Sharpe was established in 2011 to represent professional performers who are at the start of their careers and those looking to push into bigger productions after gaining some experience. Our main industry focus when submitting clients is Musical Theatre, but we submit clients for all of the following:

- West End productions
- National and International tours
- Cruise ships
- Hotels and Resorts
- Feature films
- Television and Commercials

Our clients have performed in many productions and commercials. A small selection of our credits is shown on the opposite page.

SPOTLIGHT
THE HOME OF CASTING

Spotlight – Agent Sharpe is a registered agent with the UK's largest casting database 'Spotlight'. All our courses are eligible for membership and we spend a great deal of time using Spotlight to submit our clients for professional jobs.

tagmin

Tagmin – Agent Sharpe uses Tagmin, a specially designed online portal for professional performers to link them directly with their agent, calendar and upcoming auditions.

equity

Equity – All students at Sharpe Academy may join Equity as student members if they wish to do so. Students can then progress to full membership after graduation.



Faculty



Daniel Sharpe
Principal and Agent
Tap, Singing, Acting,
Musical Theatre



Nick Jackson
Managing Director



Jodie Smith
Vice Principal
ISTD Ballet, Modern,
Tap and Stretch



Richard Baker
Musical Director



Kathryn O'Sullivan
Ballet, Pointe and
Pastoral Care



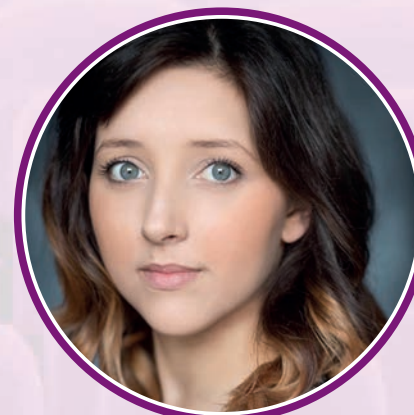
Dan Cooke
Jazz, Tap, Boys' Ballet,
Contemporary and
Chorography



Rosina Andrews
Jazz, Jazz Technique
and Stretch



Amy Ross
Musical Theatre
and Acting



Maisie Carter
Stage Combat



Luca Catoggio
Commercial Jazz



Lisa Shepherd
Tap



Jack Tutt
Acting



Jacob McIntosh
Counsellor



Harrison Rio
Sports Massage and Injury Rehabillitation



Elements Ent.
Commercial





Sharpe Accommodation The Loft

HATCH END

Moving away from home can be both exciting and worrying at the same time. We want our students to feel safe, secure and have a real home to relax in when not at college.

Our Sharpe student residence – **The Loft** – is within walking distance of college and includes six double en-suite bedrooms. The house has a communal living area, garden and fully equipped kitchen.

Priority for this accommodation is usually given to our younger students, but it is offered on a first come first served basis from April for new students who move in at the start of September.

The Loft is a fully registered HMO property and includes fire doors, integrated alarm system, gas safety certificate, TV licence and WiFi.

All bedrooms include:

- Bed
- Wardrobe
- Drawers
- Bedside table & lamp
- Mini fridge
- Television

Local Area Accommodation

Second year and final year students usually arrange their own living arrangements sharing with each other in local rented houses and flats. Where we are based in North West London has a large variety of house shares available. We can provide assistance in pointing students in the right direction if they wish to move to the area.

North West London – Hatch End

Hatch End is an affluent suburb on the outskirts of Greater London. The main street has a host of restaurants, bars, ice cream parlours, coffee shops, a post office, pharmacist, hair salons and a physiotherapy clinic.

There are several doctors and dentists within walking distance of college and a direct train line into London Euston.

Next door to our Harrow Arts Centre campus is a large Morrisons supermarket; we also have a local Waitrose, Tesco, Aldi and Asda.

The nearest town centre is **Harrow**, just a 10-minute bus ride away, which has a cinema and a range of clothing stores. **Watford** city centre is a 10-minute train ride away and has a large shopping centre and bigger selection of cafes, restaurants, bars and clubs.

London's **West End** – with its theatres, museums, galleries, shopping and vibrant nightlife – is less than 30 minutes away by train.



SharpeAcademy.co.uk
Email: Info@SharpeAcademy.co.uk
Phone: 020 3859 6216
Instagram: @sharpeacademy

Sharpe HQ
Harrow Arts Centre
171 Uxbridge Road
Hatch End
Greater London
HA5 4EA