

TRIPLE-THREAT TRAINING | AGE 18+ | NORTH-WEST LONDON

Places also
available for
exceptionally
talented 16-17
year-olds

SHARPE ACADEMY[®] OF THEATRE ARTS

Bursaries
and
Scholarships
available

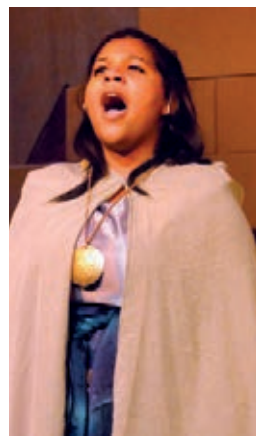
GUINNESS WORLD RECORD HOLDERS — FASTEST THEATRICAL PRODUCTION



3 Year Diploma in Professional Musical Theatre



PERFORMANCE ACADEMY ESTABLISHED IN 2008



OUR PATRONS	4
THE PRINCIPAL	5
SENIOR FACULTY	6
THE COURSE	8
Performance	9
Dance	10
Singing	12
Acting	14
ENTRY AND AUDITIONS	17
FEES AND FUNDING	20
VENUE AND FACILITIES	24
LOCATION	26

OUR PATRONS

Matt Lucas

Matt is well known around the world for his acting, comedy and musical theatre.

Credits include **Little Britain**, **Shooting Stars**, **Come Fly With Me**, **Doctor Who**, Disney's **Alice in Wonderland** films, **Les Misérables** and Jonas Åkerlund's new feature film **Polar**.

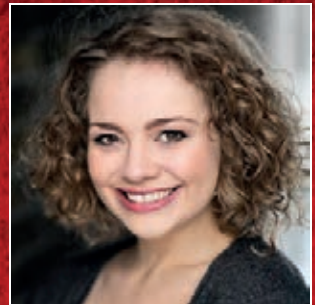


Carrie Hope Fletcher

Carrie is a successful singer, actress and author.

Theatre credits include **Heathers**, **The Addams Family**, **Les Misérables**, **Chitty Chitty Bang Bang**, Jeff Wayne's **The War of the Worlds**, **Mary Poppins** and **The Christmasaurus Live**,

Television credits include **In Two Minds**, **Break Kids**, **Wilhelmina** and **Dog & Duck**.



Giovanni Spano

Gio most recently appeared in **The X Factor** and the hit musical **Bat Out of Hell**.

Theatre credits include **Guys & Dolls**, **Dance 'Til Dawn**, The Who's **Tommy**, **Jesus Christ Superstar**, **Grease**, **Mamma Mia!**, **Footloose**, **Fame**, **Whistle Down The Wind** and **Falstaff**.

Screen credits include **The Professional** and **Holby City**.



As someone who has been through years of performance training and a professional career in musical theatre I know how difficult the road can be. I understand the challenges that performers will face and the obstacles that can be overcome with the correct training and mindset. I believe everyone is unique and through our intensive training programme each performer will reach a professional standard in musical theatre whilst retaining individuality.

There are many students on the audition circuit for musical theatre courses who are overlooked each year. This is usually down to a student lacking experience in either singing, acting or dance. Our course has been tailored to ensure students can be pulled up to the required standards in each area, whilst continuing to develop skills that they already possess.

At our auditions I won't be looking for polished performers. If you were ready for a career you would already be performing. Instead I will be searching for students who not only have talent but real potential and the determination to succeed.

At Sharpe Academy we will not pathway students after one year. This means that we will continue triple-threat training for the entire three years. A musical theatre performer should leave college with the skills and knowledge to have a full-time career in all disciplines of the arts. Our weekly timetable will include 35-45 contact teaching hours. This will be a challenge, both physically and mentally as students strive to reach their goals, but this time will pay dividends in the end when students have

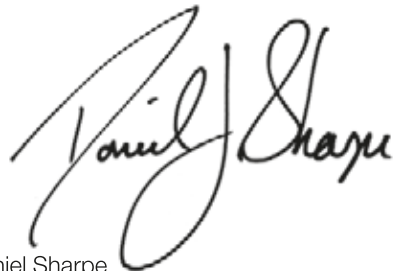
reached professional standards in all areas. Students will receive private singing tuition and our location in London means we can bring in the very best teachers from all areas of the arts.

Many people consider musical theatre performers to be weak actors so our aim is to make sure we hit a higher level of skill and technique in acting than most courses provide. Acting can be an exciting career that you never wish to retire from – but only if you've had the correct training. Our course introduces a range of acting methods to students and we will also develop annual plays as well as musicals.

Being a new college means that we won't be the top choice for many students, but those of you who are offered a place at Sharpe Academy and choose to study with us will have three years of the very best intensive training possible. Your training will be filled with the contact teaching hours you need, weekly experiences learning from the professionals, regular performances and of course all the support you need to help you along the way.

If you have the potential to be a professional performer then we would very much like to meet you.

I hope to see you at our next free audition day.

A stylized, handwritten signature in black ink that reads "Daniel Sharpe". The signature is fluid and cursive, with the first name and last name clearly distinguishable.

Daniel Sharpe

SENIOR FACULTY

Daniel Sharpe Principal & CEO

Daniel trained in Musical Theatre at **SLP College**, Leeds.

Performance credits include Dance Captain – **Evita** (*International Tour*), **Chitty Chitty Bang Bang** (*UK & International Tour*), Lead Male Singer – **Lullabies of Broadway** (*USA*), **Fire of Dance** (*European Tour*), Featured Dancer in World Tours of **Spirit of the Dance**, **The Magical Rhythms of Ireland** and **Celtic Journey**. Film & TV Credits include **Popstar to Operastar**, **The Magic Flute**, **Emmerdale**, **Heartbeat**, **At Home with the Braithwaites** and **My Parents are Aliens**.

He directed the World Record-breaking production of **Annie** in 2016 which continues to hold the official **Guinness World Records** title for the Fastest Theatrical Production.

Daniel will be teaching Musical Theatre, Acrobatics, Singing and Acting.



Nick Jackson Chief Operating Officer

Nick originally trained as a cameraman for the TV & Film industry before embarking on a successful career as a creative, graphics and marketing manager.

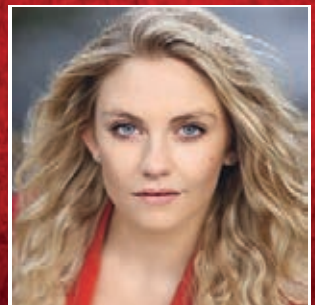
He is the co-founder of Sharpe Academy and runs the day-to-day operations alongside the company marketing, website and student registrations.



Vicki Manser Artistic Director & Head of Dance

Vicki graduated from **Urdang Academy** with a BA Honours Degree in Professional Dance and Musical Theatre. West End credits include **Bat Out of Hell** (*Dominion Theatre*), **Sunny Afternoon** (*Harold Pinter Theatre*) and **Beautiful** (*Aldwych Theatre*). Vicki has recently joined the West End cast of **Six** (*Arts Theatre*), appearing as alternate Anne Boleyn & Anna of Cleves.

Vicki will be teaching Jazz, Contemporary and Performance.



Emma Barr Head of Musical Theatre

Emma trained at **Cambridge Performing Arts** at **Bodywork Company**. Theatre credits include **Phantom of the Opera** (*Her Majesty's Theatre*), **The Wizard of Oz** (*London Palladium*) and **Evita** (*International Tour*). Emma is currently appearing in the West End production of **Les Misérables**.

Emma will be teaching Musical Theatre, Singing and Fitness.



Richard Baker Musical Director

Richard has a BA (Hons) in Music from Huddersfield and a Post Graduate Diploma in Musical Direction and Repetiteurship from LAMDA. Credits: **Secret Garden** (*Ambassadors Theatre*), **NewsRevue** (*Canal Café*), **Anyone Can Whistle** (*Union Theatre*) & **Finian's Rainbow** (*Charing Cross Theatre*). He composed for **Peter Pan Goes Wrong** and was an improvising musician for **Mischief Movie Night** (*Arts Theatre*).

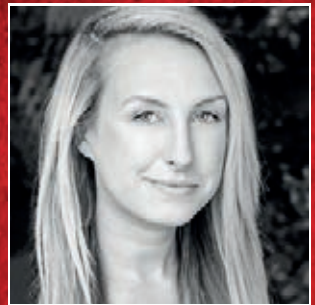
Richard will be teaching Production Vocals and Music Theory.



Jodie Smith Head of First Year

Jodie trained at **Margaret Howard Theatre College**, now Momentum Performing Arts Academy. She holds her ISTD DDE qualifications in Modern, Tap and Ballet and is also a Certified Teacher of the Acrobatic Arts syllabus.

Jodie will be teaching Flexibility, Anatomy, Body Conditioning and foundation-level Ballet and Tap.



Patricia Murray Head of Contextual Studies

Dublin born Patricia trained at **Performers College** and the **Royal Academy of Dance**, gaining a Professional Dancers Postgraduate Teaching Certificate. She will begin her Dance Science Masters Degree from September at **Trinity Laban** alongside her teaching, examining the disciplines of Physiology, Biomechanics and Psychology as applied to Dance.

Patricia will be teaching Ballet, Irish, and Dance Studies.



THE COURSE



PERFORMANCE



Musical Theatre Performance

You will perform one full-scale musical theatre production per year.

Dramatic Play

You will perform one dramatic play per year.

Presentations & Concerts

You will perform several showcases each academic year.



Back Stage Experience & Technical Skills

You will have the chance to discover additional aspects of theatre such as stage management, lighting, sound, choreography, direction, musical direction, costumes, props and set design.

Musical Theatre Repertoire

You will learn a new full number from a musical theatre production each half term, along with choreography, acting and vocal harmonies which you will prepare to performance level. These numbers will be presented in either a closed or a public performance.

In your second year we will take this one step further with a swing project to teach the art of being a full-time Swing or Dance Captain.

Audition Technique & Weekly Masterclasses

We will invite a variety of performers, directors, choreographers and casting directors into the Academy to offer regular masterclasses to help you perfect your audition technique and gain experience working with new creatives. Question and answer sessions will also take place, giving you a real insight into the professional world of musical theatre, acting and dance.



DANCE

Classical Ballet

At least 4.5 hours per week will be dedicated to Ballet throughout your three years of training, developing individual posture, technique, knowledge, performance and pas de deux skills.

Jazz (Commercial, Street & Musical Theatre)

You will work with a variety of choreographers and performers over your three years, both in weekly lessons and regular masterclasses.



Tap

Our Tap classes will focus on Rhythm (Jazz), Classical, Broadway and American street style tap dancing, such as *Tap Dogs* and *Stomp*.

Irish

You will learn the art of Irish Dance through regular classes.

Acrobatics

Our aim is to ensure you are producing high quality tricks, flips and tumbles by the end of your training. You will build muscle and will develop better posture, flexibility and core strength.



Contemporary

You will work on Cunningham and Graham techniques in your first year before branching out into more commercial styles of Contemporary in Year 2 & Year 3.

Partner Work

You will work on pas de deux in Ballet and will also concentrate on Jazz partner work, focusing on routines, lifts and tricks.

Fitness, Flexibility & Body Conditioning

You will take weekly classes in Body Conditioning and Flexibility. You will be encouraged to place a healthy and active lifestyle at the heart of your time with us.

ISTD Vocational Examinations *(Optional – Additional fees apply)*

Vocational ISTD examinations can be taken in Ballet, Tap and Modern.



SINGING



Solo Singing

You will develop individual vocal skills, working on technique, repertoire and performance. Regular showcases and open classes will give you the opportunity to perform in front of audiences to try out new materials and gain valuable feedback.

Duo/Trio/Group Singing

You will have weekly classes working on a variety of materials in the different vocal groups – soprano, alto, tenor and bass. Regular concerts will be given which will allow you the opportunity to perform different materials.

Vocal Technique & Music Theory

You will come to fully understand vocal anatomy, breathing and the science behind the voice. You will develop an understanding of several techniques including the ESTILL voice training method, whilst also looking into artistry and performance styles of singing. Music Theory will be taught to enhance your understanding of the music you perform.

Acting Through Song

You will study text in a song and will use your acting skills to really understand your character, analysing lyrics to portray feelings and emotions whilst singing.

History of Musical Theatre, Acting and Dance

In your first year of the course you will study the history of these art forms in order to give yourself a greater understanding of their origins and how they developed.

Associate Diploma Trinity College London (*Musical Theatre*)

(Optional – Additional exam fees apply)

In your second year, as part of your private 1-2-1 lessons, you will have the chance to work towards your Associate Diploma from Trinity College London. This qualification encourages candidates to be multi-skilled, reflective performers in Musical Theatre, preparing and performing a programme of work that shows professional potential.

The Associate Diploma Trinity College London (Musical Theatre) is a Level 4 qualification of the Regulated Qualifications Framework.



ACTING

Improvisation, Devised Drama & Physical Theatre

You will develop skills in many different types of drama, with a large emphasis placed upon imagination and character creation. You will be guided through improvisation, devised drama and physical theatre. Regular showcases will be held to perform your created works.

Contemporary & Classical Texts

You will study numerous plays throughout your three years, including classical texts such as Ancient Greek and Shakespeare through to more modern-day plays. The West End is on our doorstep, therefore regular theatre visits will also take place.

Acting for Television & Film

You will study the art of Acting for Television and Film, creating your own materials such as commercials, sitcoms and features. You will learn how to self-tape for auditions, which is slowly becoming standard practice for first-round auditions in the TV & Film industry.





Acting Technique, Accents, Voice & Repertoire

You will learn a variety of acting techniques over your 3 years. You will study a variety of accents including UK Regional, American, International and RP.

You will also build a solid repertoire of monologues, both classical and contemporary.

Stage Combat

Regular Stage Combat workshops will be held to ensure you have a good understanding of this art form before you graduate.

LAMDA Advanced Examinations *(Optional – Additional fees apply)*

Students aged 16-17 may wish to take their Grades 6-8 and students aged 18+ can work towards their PCERTLAM (LAMDA Certificate in Speech and Drama: Performance Studies). These exams develop the voice, presentation and drama skills, whilst also concentrating on classical, pre-1980 and contemporary monologues.



The Sharpe Academy Diploma in Professional Musical Theatre is aimed at students aged 18+. However, we will consider exceptionally talented students aged 16-17.

Entry Requirements

- Minimum Age: **16+**
- Entry is by **Audition only**.
- **Students aged 16 & 17** must have passed GCSE Maths & English (**Grade A*-C or 9-4**) in order to start the course. No additional qualifications are required.
- **Students aged 18+** do not require any formal qualifications.

Places will be offered only to students who we feel can have a successful career as a musical theatre performer.

All students who wish to be considered for a place must attend an audition. To book a FREE audition please complete our online form at **[SharpeAcademy.co.uk](https://www.sharpeacademy.co.uk)**.

Once we receive your application you will be invited to one of our audition days.

Audition Dates

Auditions are scheduled for:

- Tuesday 28th May 2019
- Tuesday 2nd July 2019

Audition places are limited so please apply early to avoid disappointment.

What to Prepare

You should prepare the following for your audition:

One Musical Theatre Song

This should last no longer than 3 minutes and should show your vocal capabilities and range. Sheet music should be brought for our pianist to play. We will also have a speaker to connect to your music player or phone if you wish to use a backing track. Sheet music is preferred.

Please note, you will be stopped exactly after 3 minutes so you may wish to start at an appropriate point in the song – the ideal place may not be the beginning.

One Acting Monologue

This can be from either the modern or classical era. It should last no longer than 3 minutes and you should use your own voice and no accents. This should be a performance in which you fully embrace the character.

A printed copy of your monologue should be provided for the panel to follow as you perform the piece. If you are unsure how to select a monologue please contact our office and we will suggest some options.

The audition will be split into the following sections:

Introduction by the Principal

Learn all about Sharpe Academy and the course itself. Parents are welcome to attend.

Ballet Class

Please wear appropriate Ballet gear or tight fitting clothes. This will show your posture and technique. Ballet shoes must be worn.

Drama Class

You will take part in a group workshop.

Jazz Class

Please wear dancewear that you can comfortably move in. You will be taught a short Commercial Jazz routine and will perform it in small groups.

Solo Presentation

You will present your prepared song and monologue to the panel and your fellow auditionees.

Interviews

You may be asked to stay at the end of the day for an interview. This will be a chance for one of our senior directors to discover a little more about you and your future goals. Parents are welcome to attend.

We will also discuss course costs and will answer any questions you may have. You will hear within 14 days of your interview if you have been offered/declined a place on the course or if you have been placed on our reserve list.

Accepting Your Place

If you wish to accept your place you will be required to pay a registration fee of **£125.00**.

Once this registration fee has been paid there will be a 14-day cooling off period during which time you may withdraw your acceptance and a full refund of the registration fee will be given.

When this cooling off period has passed, you will be registered on the course, the registration fee becomes non-refundable and a **£500.00** course deposit will be due. This deposit is non-refundable if you fail to complete the full 3 years.

The deposit will be refunded in the form of a credit towards the final term of your third year of study.

Reserve List

Students may be placed on our reserve list. We hope to let you know if you have been successful within 14 days of our July audition date.

If you are on the reserve list and wish to be removed as you have obtained a place elsewhere, please e-mail our office.



Accommodation

Sharpe Academy will assist students where possible to find suitable accommodation if they do not live locally.

Once places have been offered we will try to arrange either a host family or rented accommodation for any students who require it. Please consider the additional cost of living expenses when making your application. No accommodation bursaries are available.

Sharpe Academy is unable to sponsor visa applications from other countries. All students must be eligible to study in the UK in order to be accepted onto the course.



FEES AND FUNDING

Fees for the Sharpe Academy 3 Year Diploma in Professional Musical Theatre are **£3,600.00 per term (incl. VAT)**

The course fee includes your training, usually split into 35-45 hours per week / 10 weeks per term. There are 3 terms in an academic year, commencing in September, January and April.

Fees can be paid annually, termly, or a monthly payment plan can be arranged for you. Fees are due before the first day of term unless you have arranged a monthly payment option. Monthly payments start in the August before the start of the academic year.

Scholarships & Bursaries

Sharpe Academy has a Bursary and Scholarship Programme. Our aim is to offer these to around 50% of students on the course. For our September 2019 intake we have the following available:

Principal's Full Scholarship

Each year the Principal will award ONE full tuition scholarship. **Please note**, the scholarship covers course fees only. The scholarship holder will be expected to pay any additional costs.

Carrie Hope Fletcher Full Scholarship

Our Patron, Carrie, will award ONE full tuition scholarship. **Please note**, the scholarship covers course fees only. The scholarship holder will be expected to pay any additional costs.



Sharpe Academy Bursary

Up to £6,000.00 per annum discount on fees. This is means-tested and financial records of the student and both parents will be required, should you be offered a place on the course but do not have the funds to pay.

Sharpe Academy Scholarships

Up to £6,000.00 per annum discount on fees. Scholarships will be awarded based on exceptional ability in:

- Acting
- Dance
- Singing
- Performance
- Acrobatics/Gymnastics

Can I request a Bursary & Scholarship Combination?

Yes. If you are offered a place on the Sharpe Academy Diploma in Professional Musical Theatre course, you can request to be considered for either a Bursary, Scholarship or a combination of the two. There is a **maximum £6,000 per annum discount** on fees.

The fees could work out as little as **£300.00 per month** for the duration of the three years (based on a monthly payment plan for 36 months).



Additional Funding

At the present time this course isn't eligible for any additional funding apart from the Sharpe Academy Bursary and Scholarship programme. You may however be able to apply for some of the following:

- **Arts Grants** from your local Council or Area.
- **Personal Loans**
These are available from your bank or building society.
- **Sponsorship**
Students can write to businesses and individuals for sponsorship. This can help not only with fees, but with additional costs such as uniform.



Additional Costs

Costs in addition to the course fees will include:

- **Uniform**
- **Dance Shoes**
- **Out-of-Course Additional Classes**
- **Examinations**
- **Theatre/Film Tickets**

- **Registration Fee**

£125 to be paid should you wish to accept the place.

This registration fee is refundable within the 14-day cooling off period, after which it becomes non-refundable.

- **Course Deposit**

£500 non-refundable deposit to be paid should you wish to accept the place. This deposit will be deducted from your final term in the third year of training.

Deposit payments are non refundable and will not be returned to you other than as an account credit for your ninth academic term.

- **FREE Audition**

We do not currently charge anything for you to attend our audition day. We hope you have a great time taking part in all the planned classes. Places are limited so please apply early to avoid disappointment.



- **Accommodation**

Sharpe Academy does not have a halls of residence. We will, however, assist students in finding suitable accommodation or host families should they require it. **Please note**, the cost of this will depend on the type of accommodation. London prices can be expensive and this should be carefully considered before accepting a place on the course.

- **Acting/Vocal Materials**

Books, plays, sheet music, backing tracks, etc.

- **Agency & Spotlight Casting Directory**

Annual cost for young performers under the age of 25 is currently around £100.00 per year. This payment goes directly to Spotlight.

Agent Sharpe takes a flat-rate commission of **20% + vat** on any television, film or modelling work and **15% + vat** for any Stage work obtained whilst we represent you and you are still on the Diploma course.

Our standard agency commission when you have graduated is a set **15% + vat**.



VENUE AND FACILITIES

HARROW ARTS CENTRE, located in North-West London, will be our new home from September 2019.

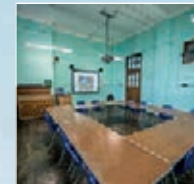
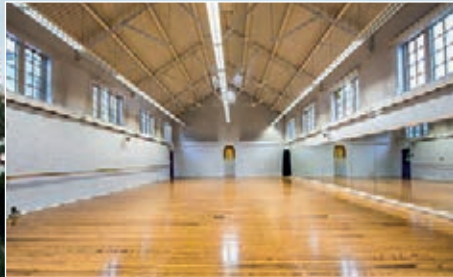
Our College premises are ideally located with excellent transport links.

- 2 minute walk from **Hatch End Station**
- Direct train to **London Euston** and **Watford Junction**
- On-site parking

Sharpe Academy will have our own studios in addition to the Arts Centre facilities.

Together, this includes:

- **The Elliot Hall Theatre** 450-seat Performance Venue
- **4 Dance Studios** with mirrors
- **4 Large Studios**
- **4 Classrooms**
- **On-site Cafe**
- **Changing rooms**



LOCATION



LONDON

Our close proximity to the Capital will enable us to make regular visits to a variety of top shows, whether musical, play or fringe.

A short 30-minute train journey takes you into the heart of a city famous for its world-class shopping, restaurants, museums and night life. Spend your time with us exploring London and soaking up the countless inspirations and experiences that you will find at every turn.

The **West End** – one of the largest and most vibrant theatre districts in the world – is right on our doorstep!





